

STATISTICS SA

The Data Portal in Stats SA

5 NOVEMBER 2019



stats sa

Department:
Statistics South Africa
REPUBLIC OF SOUTH AFRICA



Statistics South Africa

Mission

'To lead and partner in statistical systems and products for evidence-based decisions.'



Minister in the
Presidency: Planning,
Monitoring and
Evaluation

Jackson Mthembu

The *vision* of **Stats SA** is
*The South Africa I know the home
I understand*



Statistician-General
Risenga Maluleke



stats sa

Department:
Statistics South Africa
REPUBLIC OF SOUTH AFRICA



Who are we?

A national government department

Accountable to the Minister in the Presidency

Mandated to:

- collect, produce and disseminate official and other statistics
- coordinate producers of statistics

Activities regulated by the Statistics Act (Act 6 of 1999) provides for professional independence and oversight by the Statistics Council



stats sa

Department:
Statistics South Africa
REPUBLIC OF SOUTH AFRICA

Values

- Integrity
 - Transparent
 - International best practices;
- Empowering partnerships
 - Achieve better coordination and collaboration;
- Service excellence
 - Satisfy customer needs – operational excellence and value for money
 - increasing productivity through innovation.



stats sa

Department:
Statistics South Africa
REPUBLIC OF SOUTH AFRICA



Strategic Direction (2015/2016 – 2019/2020)

What have we set out to achieve in our strategy?



Informing a nation



Trusted statistics



Partners in statistics



Capable organisation



Statistical leadership

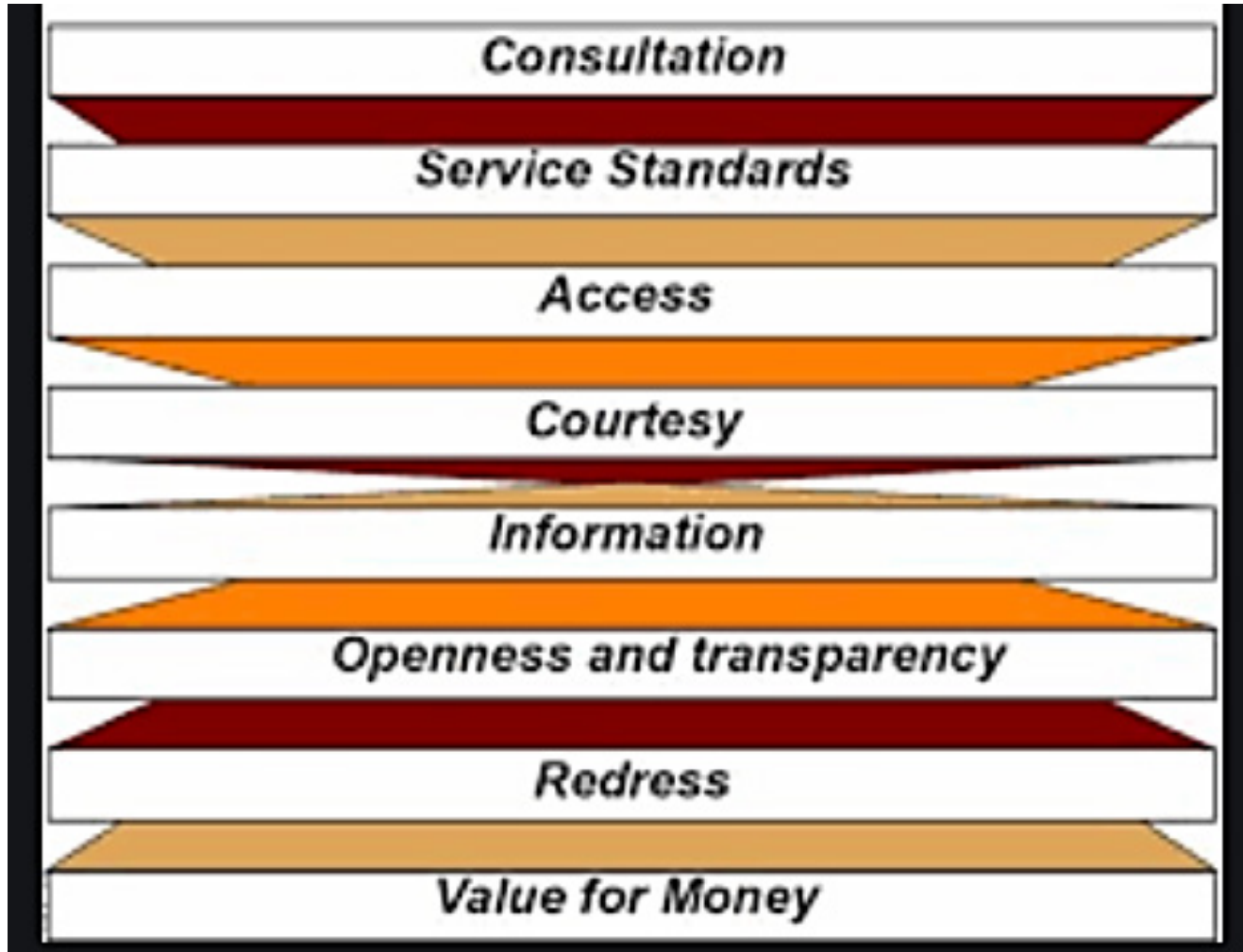


stats sa

Department:
Statistics South Africa
REPUBLIC OF SOUTH AFRICA



BATHO PELE PRINCIPLES

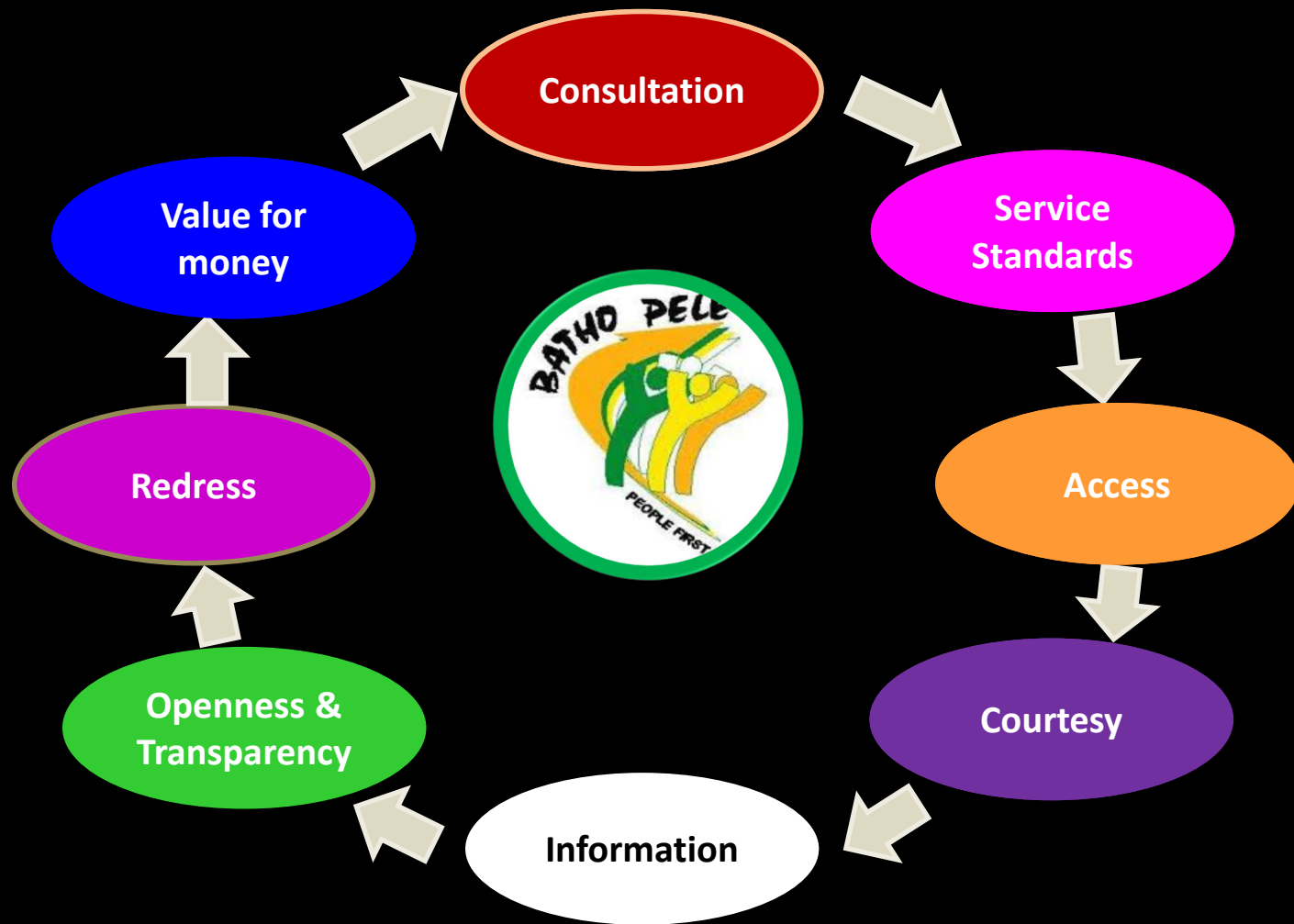


stats sa

Department:
Statistics South Africa
REPUBLIC OF SOUTH AFRICA



Key Principles guiding public servants



SERVICE CHARTER

User consultation

- by advocating for use of data for evidence based decision making

Access

- by provide channels to access information such as(ROMBI, MOBI, Supercross and the website)

Courtesy and Respect

- We treat our stakeholder at all times

Open and transparent

- About the methodologies we use when collecting data and compiling products

Redress

- Information gaps by expanding our sieves in municipalities and rural areas

Information

- Release our information on time inline with best international practices.

Service standards

- By keeping abreast with the needs our stakeholders

Value for money

- Utilising resources effectively and efficiently



stats sa

Department:
Statistics South Africa
REPUBLIC OF SOUTH AFRICA



Stats SA Service: Standards Information Services



Statistics South Africa Service Charter

What does Statistics South Africa (Stats SA) do?

Statistics South Africa is a national government department responsible for the production and coordination of official and other statistics to assist organs of state, business and the public in evidence-based decisions for planning, policy development and measurement governed by the Statistic Act (Act No. 6 of 1999)

Vision

Our vision is to deliver
The South Africa I know,
the home I understand

Mission

To lead and partner in
statistical systems and
products for evidence-
based decisions

Strategic goal

To increase the supply and use of official and other quality
Statistics for Transparency, Accountability, Results-based
Management and Transformation (START) through coordination,
integration and innovation

Organisational values



Integrity



Empowering
partnership



Service
excellence

Stats SA key services



Economic
statistics



Population
statistics



Statistical services,
support and advice

Our conduct when interacting with the public

When collecting data, Stats SA staff must:

- Identify themselves by name, department (Stats SA) and outline the purpose of the visit
- Deal with respondents professionally

Stats SA will uphold Batho Pele Principles by committing to the following:

- We shall conduct user consultation sessions by advocating the use of data for evidence-based decision-making
- We shall provide various channels to access information such as ROAMBI, MOBI, SuperCROSS and the website
- We shall treat our stakeholders with courtesy and respect at all times
- We shall be open and transparent about the methodologies we use for collecting data and compiling our products
- We shall strive to redress information gaps by expanding our services in the municipalities and rural areas
- We shall continue to release our information on time and in line with international best practices
- We shall maintain our service standards by keeping abreast with the needs of our stakeholders
- We shall ensure value for money by utilising our resources effectively and efficiently

Our service standards

Our stakeholders will be attended to in a friendly and professional manner
Telephones will be answered at all times and emails will be responded to
during official working hours: 08:00 – 16:30
Requests are classified as per below:

- Simple requests will be responded to within 15 minutes
- Normal requests will be responded to within 24 hours
- Special requests will be responded to within 5 working days

Our product standards

We commit to compile our products by
adhering to national, continental and
international best practices
Nationally: South African Statistical
Quality Assessment Framework (SASQAF)
Continently: African Statistics Charter
Internationally: Fundamental Principles
of Official Statistics

Our response is on time, first time. Your voice counts.

We strive for service excellence.

In cases of misconduct, poor service delivery or difficulties in any form of communication,
please contact: 012 310 0174/4825 Email: Customercare@statsa.gov.za

About our products, please contact:
User Information Services:
012 310 8600
Fax: 012 310 8500
Email: info@statsa.gov.za

Main switchboard:
012 310 8911
Fax: 012 321 7381
Website: www.statsa.gov.za

Physical address:
ISibulo House, Koch Street, Sandvliet,
Pretoria, 0002
Postal address:
Private Bag X44, Pretoria, 0001

Accounting Officer's Declaration:

I, *Rwengwa Mubheke* (Statistician-General of Statistics South Africa), commit my department in terms
of Part 3, C.2 of the Public Service Regulations, 2001, as amended, to adhere to this charter.

Stats SA will uphold Batho Pele Principles by committing to the following:

- We shall conduct user consultation sessions by advocating the use of data for evidence-based decision-making
- We shall provide various channels to access information such as ROAMBI, MOBI, SuperCROSS and the website
- We shall treat our stakeholders with courtesy and respect at all times
- We shall be open and transparent about the methodologies we use for collecting data and compiling our products
- We shall strive to redress information gaps by expanding our services in the municipalities and rural areas
- We shall continue to release our information on time and in line with international best practices
- We shall maintain our service standards by keeping abreast with the needs of our stakeholders
- We shall ensure value for money by utilising our resources effectively and efficiently

Our service standards

*Our stakeholders will be attended to in a friendly and professional manner
Telephones will be answered at all times and emails will be responded to
during official working hours: 08:00 – 16:30
Requests are classified as per below:*

- Simple requests will be responded to within 15 minutes
- Normal requests will be responded to within 24 hours
- Special requests will be responded to within 5 working days

Our product standards

*We commit to compile our products by
adhering to national, continental and
international best practices*

- Nationally: South African Statistical Quality Assessment Framework (SASQAF)
- Continently: African Statistics Charter
- Internationally: Fundamental Principles of Official Statistics

Main focal areas

Implement statistical geography – for transforming national development information landscape;

Strengthen coordination mechanisms and compliance to optimise informatics efficiency and effectiveness

Embrace data revolution – change capabilities of information collection, access; analysis, use, retrieval, storage and archiving, increasing and deepening knowledge bases

Create a state-wide statistics service through standardisation, training, standards, classifications and deployment

Establish institutional arrangements and protocols – lead and deliver a professional and sustainable National Statistics System.



stats sa

Department:
Statistics South Africa
REPUBLIC OF SOUTH AFRICA



Continental policy agenda



stats sa

Department:
Statistics South Africa
REPUBLIC OF SOUTH AFRICA



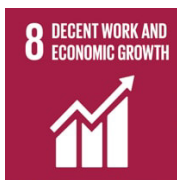
Global policy agenda: SDGs

*Sustainable Development Goals: Baseline report 2017

SA can report on **68,1%** of Social Goals



SA can report on **69%** of Economic Goals



SA can report on **29,4%** of the Means of Implementation

SA can report on **56,5%** of Environmental Goals



SA can report on **73%** of the Peace and Security Goal



stats sa

Department:
Statistics South Africa
REPUBLIC OF SOUTH AFRICA



Integrated Indicator framework (IIF)



NDP is at the Centre. IIF provides a thread across policy agendas



stats sa

Department:
Statistics South Africa
REPUBLIC OF SOUTH AFRICA



SONA 2019

Thuma Mina

Economic transformation and job creation

Education, skills and health

Consolidating the social wage through reliable and quality basic services

Spatial integration, human settlements and local government

Social cohesion and safe communities

A capable, ethical and developmental state

A better Africa and World



stats sa

Department:
Statistics South Africa
REPUBLIC OF SOUTH AFRICA



Measuring the economy



Economic performance



Employment



Price stability



**Financial performance of
government & private sector**



**Primary, secondary & tertiary
sector**



Environment & Agriculture

**220 statistical
reports**



stats sa

Department:
Statistics South Africa
REPUBLIC OF SOUTH AFRICA



Measuring society



45 statistical reports



Education and skills

Unemployment and job creation

Health and social development

Poverty, inequality & population dynamics

Housing and access to basic service delivery

Governance, Crime & Public safety



stats sa

Department:
Statistics South Africa
REPUBLIC OF SOUTH AFRICA





1 DEMAND

Increasing demand for statistical information

- National
- Continental
- Global
- Other



2 BUDGET

- Severe budget cuts
- **Warm bodies not affordable**
- IES/LCS not fully funded
 - Poverty estimates impacted
 - CPI basket
 - National accounts



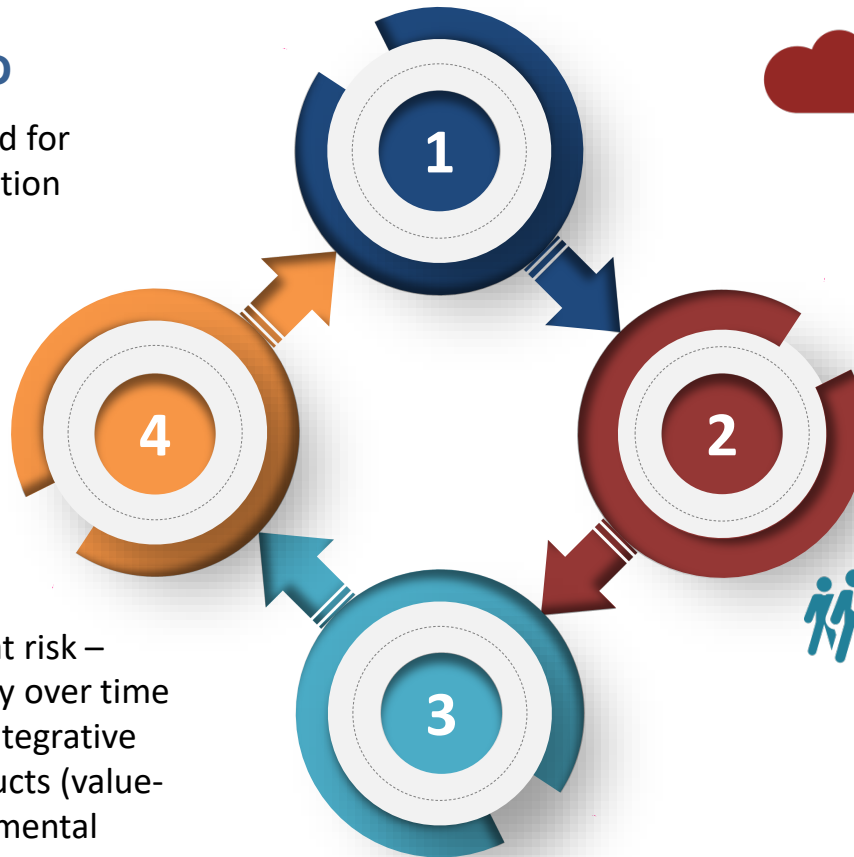
4 SUPPLY

- Core statistics at risk – declining quality over time
- Discontinued integrative statistical products (value-add) & environmental accounts products



3 PEOPLE

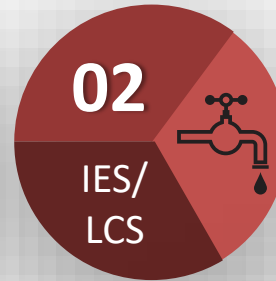
- Skills level (capability)
- Declining skills base (cannot fill critical vacancies)
- **Vacancy rate: 17,2%**
- Staff over-stretched



Key indicators @ risk

GDP

*Consequence for
Economic growth*

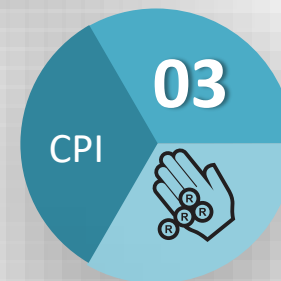
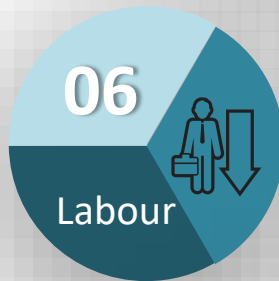


Poverty and service delivery indicators

*Consequence for
Socio-economic planning &
policy development
Determining the CPI basket*

Unemployment

*Consequence for
Job creation*

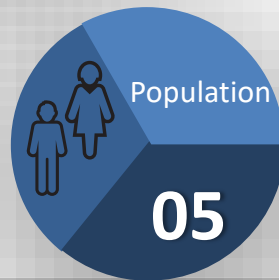


CPI

*Consequence for
Inflation targeting and
Monetary policy*

POPULATION estimates

*Consequence for
DoRA*



Fertility & Mortality

*Consequence for
Health policy & planning*



stats sa

Department:
Statistics South Africa
REPUBLIC OF SOUTH AFRICA



Work Programme Priorities: 2019/20

Strategic Priorities

- 1 Driving legislative reform
- 2 Maintaining the quality of core statistics
- 3 Integrating, innovating and modernising the Statistics Value Chain
- 4 Transformation and organisational reform
- 5 Rolling-out the Integrated Indicator Framework
- 6 Preparing for Census 2021 – conduct mini-test

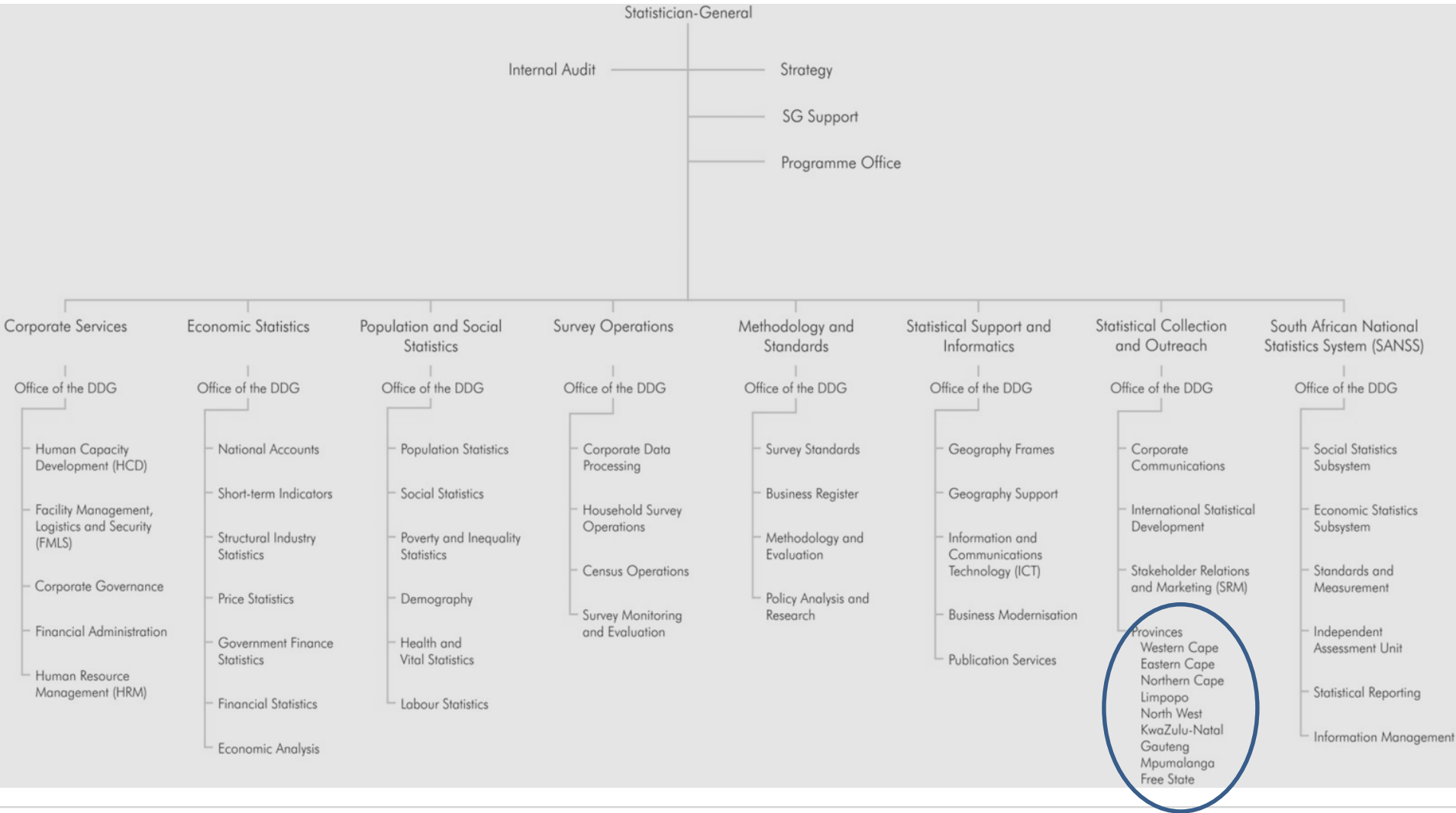


stats sa

Department:
Statistics South Africa
REPUBLIC OF SOUTH AFRICA



Organisational Structure

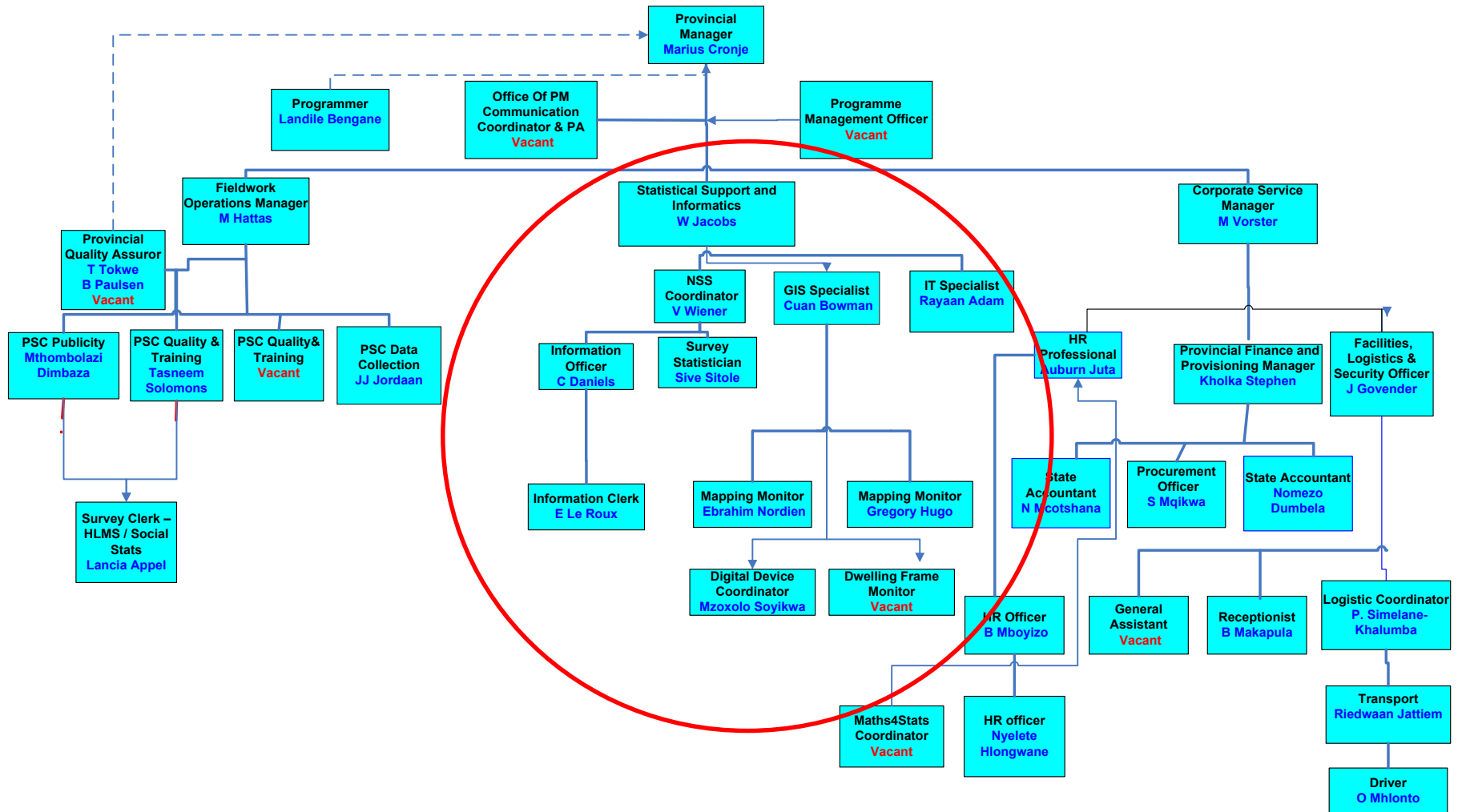


stats sa

Department:
Statistics South Africa
REPUBLIC OF SOUTH AFRICA



Provincial Structure (June 2019)

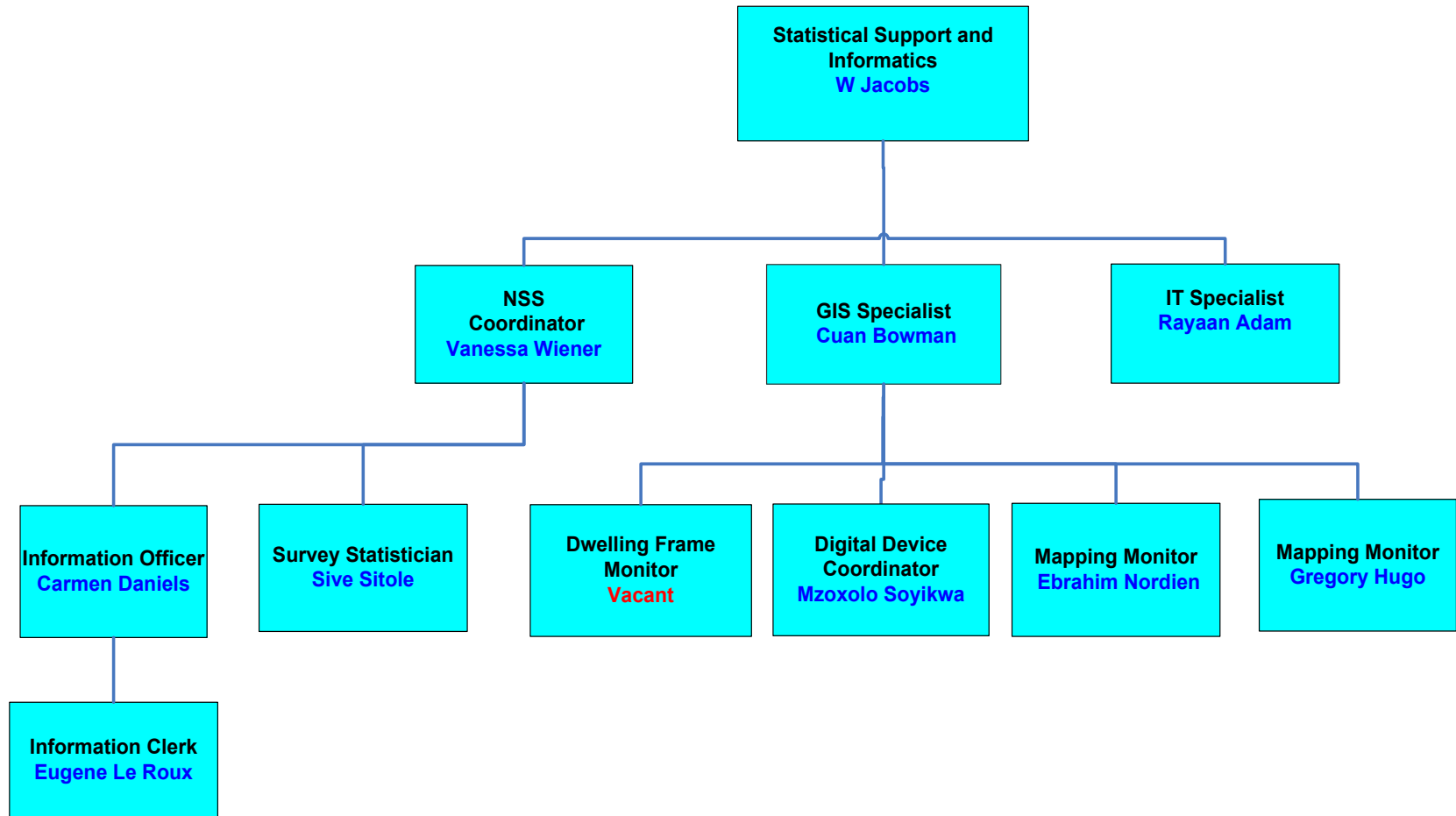


stats sa

Department:
Statistics South Africa
REPUBLIC OF SOUTH AFRICA



Statistical Support & Informatics Structure



stats sa

Department:
Statistics South Africa
REPUBLIC OF SOUTH AFRICA



Looking ahead

PROVINCIAL PERSPECTIVE



stats sa

Department:
Statistics South Africa
REPUBLIC OF SOUTH AFRICA



The Customer



Key Result Areas



Compilation of CRM tool

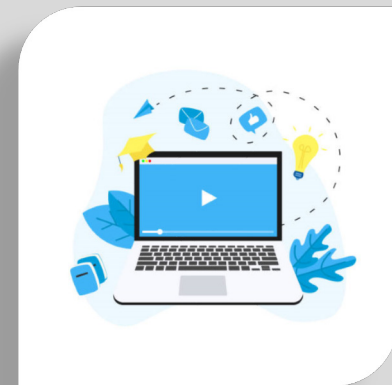
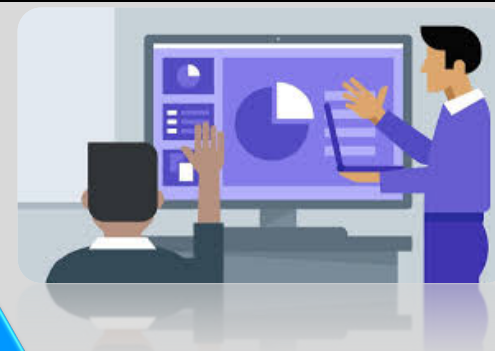
Dissemination of Stats SA products & services

Training & Installation of software

Review/Statistical Analysis of reports

Administration

Skills Required



Skills Required for an Information Officer...cont.



Positive attitude

Communication skills

Adaptability

Good work ethic

Team player

Soft skills

- Courteous
- Patience
- Respect
- Enthusiastic

- Listening
- Non verbal communication
- Clarity

- Extra hours
- Prioritize
- Maintain composure

- Punctual
- Meet deadlines
- Reliable

- Intercultural awareness
- Caring
- Assist

Social Statistics: Demography

Survey	Time schedule	Latest release year	Types of information	Geographical Level
Census	2001 & 2011	2002 & 2012	Demographic, Households Characteristics, Employment, Income, Disability, Migration, Parental Survival & Education	National, Provincial, District, Local Municipality, Town, Suburb, 2011 Wards and Small Area Layer
Community Survey	2007 & 2016	2008 & Jun./Aug. 2016	Demographic, Household Characteristics, Employment, Income, Migration & Education	National, Provincial and Local Municipality
Mid-Year Population Estimates	Annual	2015	Population Projections, HIV Prevalence, Life Expectancy, Migration Patterns & Fertility	National & Provincial



stats sa

Department:
Statistics South Africa
REPUBLIC OF SOUTH AFRICA



Social Statistics: Vital Statistics

Survey	Time schedule	Latest release year	Types of information	Geographical Level
Crime Statistics Series 1, 2 & 3	Annual	2014, 2015 & 2016	Exploration of selected crimes	National & Provincial data
Documented Immigrants	Annual	2015	Provides information on the number, nationality, types of permits and the age structure of the recipients of South Africa temporary and permanent residence permits	National
Domestic Tourism Survey	Annual	2015	Provides statistics on the travel behaviour and expenditure of South African residents travelling within and outside the borders of South Africa.	National & Provincial
Gender series vol. 1 -2 <ul style="list-style-type: none"> • Economic Empowerment, 2001-2014 • Education & Gender, 2001-2014 	Annual	2015	<p>Provides analysis relating to gender disparities in economic empowerment using secondary data from Stats SA, as well as administrative data obtained from external sources.</p> <p>Provides analysis relating to gender and educational outcomes using secondary data from Stats SA, as well as administrative data obtained from external sources.</p>	National & Provincial



Social Statistics: Vital Statistics

Survey	Time schedule	Latest release year	Types of information	Geographical Level
General Household Survey	Annual	2015	The GHS covers six broad areas, namely education, health and social development, housing, household access to services and facilities, food security, and agriculture.	National & Provincial data
GHS Series Vol. 1-7	Annual	2016	Exploration of selected GHS themes such as "Housing from a Human Settlement Perspective (2016 publication)	National & Provincial
GHS : Selected Development Indicators	Annual	2016	Provides data specifically aimed at reporting on the various development indicators measured and/or verified by means of GHS Questionnaire.	National & Provincial
Living Conditions Survey <ul style="list-style-type: none"> • 2008/2009 • 2014/2015 (data not released) 	Every 5 years	2011	This report provides information on the living circumstances of households in South Africa with special reference to spending patterns of households on different expenditure items.	National & Provincial



stats sa

Department:
Statistics South Africa
REPUBLIC OF SOUTH AFRICA



Social Statistics: Vital Statistics

Survey	Time schedule	Latest release year	Types of information	Geographical Level
Marriages & Divorces	Bi-Annual	2014	This publication provides information on civil marriages, customary marriages and civil unions that were registered in the South African national marriage registration systems maintained by the (DHA)	National & Provincial
Mortality and Causes of Death in S.A	Annual	2015	This release is based on all death notification forms received from the DHA. Basic information on the causes of death are presented.	National, Provincial & District
National Household Travel Survey	Ad-Hoc	2014	This survey was conducted with the objective of gaining a better understanding of the transport needs and behaviour of households.	National & Provincial
Poverty Trends in S.A: An Examination of Absolute Poverty between 2006 & 2011	Ad-Hoc	2014	We profile poverty at both a household and individual level. This report also examines the expenditure profile of poor and non-poor households with specific attention given to the differences in food expenditure between these two groups.	National & Provincial



stats sa

Department:
Statistics South Africa
REPUBLIC OF SOUTH AFRICA



Social Statistics: Vital Statistics

Survey	Time schedule	Latest release year	Types of information	Geographical Level
Recorded Live Births	Annual	2014	The release is based on births registered and collated through the national birth registration system maintained by the DHA.	National & Provincial
South African Multidimensional Poverty Index	Ad-Hoc	2014	The main purpose of this report is the provision of poverty maps and poverty data at provincial and municipal levels.	Provincial & Local Municipality
Social Profile of Vulnerable Groups		2013	This report attempts to highlight some of these challenges by providing a snapshot of vulnerable groups (specifically children, youth, women, people with disabilities and the elderly) in terms of issues such as household characteristics, housing, access to basic services, economic participation and income, health and well being, and finally education and skills development.	National & Provincial
Tourism & Migration	Monthly	2016	The information in this release pertains to arrivals into and departures from RSA, of both South African residents and foreign travellers, as recorded at all national border posts.	National & Provincial



Social Statistics: Vital Statistics

Survey	Time schedule	Latest release year	Types of information	Geographical Level
Vulnerable Groups Series 1: The Social Profile of the Youth (2009-2014)	Ad-Hock	2016	This report attempts to highlight some of these challenges by providing a snapshot of vulnerable groups (specifically children, youth, women, people with disabilities and the elderly) in terms of issues such as household characteristics, housing, access to basic services, economic participation and income, health and well being, and finally education and skills development. Data is drawn from the GHS 2002-2009.	National & Provincial
Victims of Crime	Annual	2015	Objectives of VOCS are to determine: <ul style="list-style-type: none"> • The nature, extent and patterns of crime in South Africa, from the victim's perspective • Victim risk and victim proneness, so as to inform the development of crime prevention and public education programmes • People's perceptions of services provided by the police and the courts as components of the criminal justice system 	National & Provincial



Social Statistics: Labour Statistics

Survey	Time schedule	Latest release year	Types of information	Geographical Level
Quarterly Labour Force Survey	Quarterly	2016	Measures the dynamics of the South African labour market, producing indicators such as employment, unemployment and inactivity.	National & Provincial
National & Provincial Labour Market trends – various reports	Quarterly & Annually	2015	The aim is to provide users with an analysis of various aspects of the South African labour market at provincial level based on current labour market information. Each report will focus on a different theme and the time frame of analysis will vary.	National & Provincial
Volunteer Activities Survey	Every 4 Years	2015	The specific objectives of this survey are: <ul style="list-style-type: none"> •To collect reliable data about people who are involved in volunteer activities. •To identify organisation-based and direct volunteering. •To give a profile of those engaged in volunteer activities. •To estimate the economic value of volunteer work. 	National & Provincial



Economic Surveys : Prices

Survey	Time schedule	Latest release year	Types of information	Geographical Level
Consumer Price index	Monthly	2016	Price changes by various product and service categories	National
Quarterly Employment Survey	Quarterly	2016	Employment numbers and salaries by sectors	National
Motor, retail , manufacturing sales	Monthly	2016	Income and sales within respective industries	National
Annual Financial Statistics	Annual	2015	Income and expenditure, Balance sheet, property value on industry aggregate level.	National
Quarterly financial statistics	Quarterly	2016		National
Income and expenditure of households,	5 Yearly	2012	Sources of income, Expenditure ,goods and services consumed in households.	National and Provincial
Earnings and spending in SA	2006-2011	2015	To examine changes in households income, sources of income that households rely on and To examine changes in households' expenditure	National



stats sa

Department:
Statistics South Africa
REPUBLIC OF SOUTH AFRICA



Economic Surveys : National Accounts

Survey	Time schedule	Latest release year	Types of information	Geographical Level
Gross Domestic Product	Quarterly	2016	Economic activity by sector	National
Monthly earnings of South African, 2010	2008	2010	To measure the dynamics of the South African labour market, producing indicators such as employment, unemployment and inactivity.	National



stats sa

Department:
Statistics South Africa
REPUBLIC OF SOUTH AFRICA

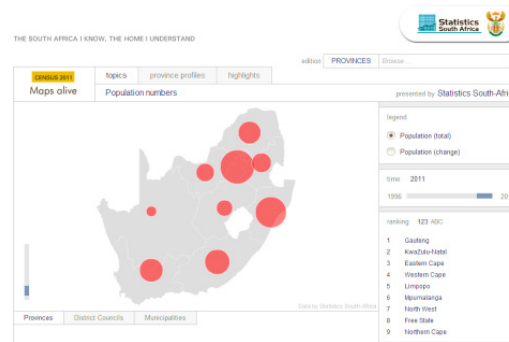


Product Availability

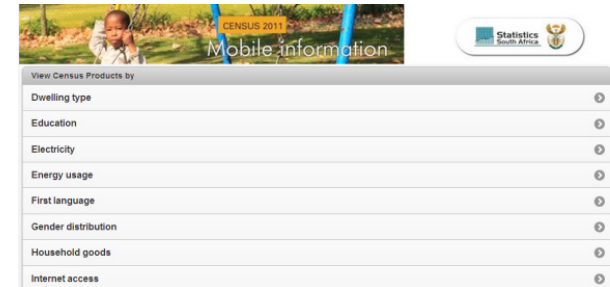
Printed



Interactive Web Based



Interactive Mobile



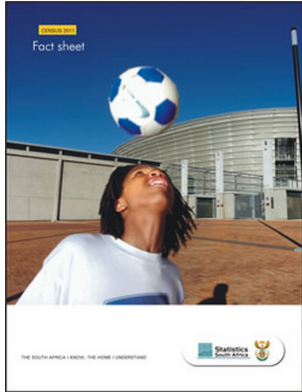
stats sa

Department:
Statistics South Africa
REPUBLIC OF SOUTH AFRICA



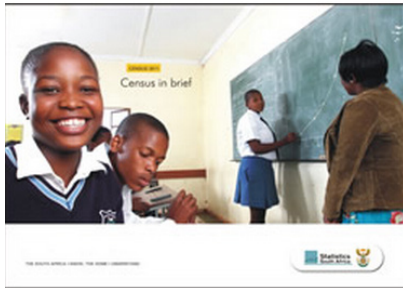
Printed

(Available in Hardcopy and online PDF)



Fact Sheets

These will be designed to be quick-reference products of not more than two pages in order to assist in the use and interpretation of census data.



Census in Brief

This will be an A6 booklet which will be an easy-to-use product consisting of tables and graphs at national and provincial levels. The product will provide information at individual and household levels. It will be made available in print and electronic formats



Highlights of Key Results

This document highlights processes that were undertaken during the execution of Census 2011 and key results generated from the census.

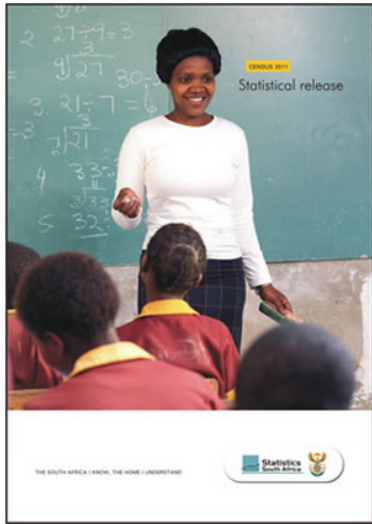


stats sa

Department:
Statistics South Africa
REPUBLIC OF SOUTH AFRICA



Printed (Available in Hardcopy and online PDF)



Statistical Release

Stats SA main statistical release



Key Results

This will be an A6 pamphlet which will highlight some of the key results.

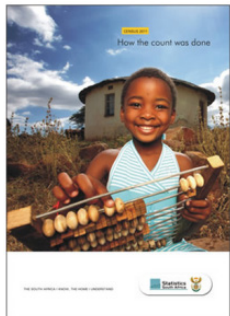


stats sa

Department:
Statistics South Africa
REPUBLIC OF SOUTH AFRICA



Printed (Available in Hardcopy and online PDF)



How the Count was done

This publication provides a summary of the various activities that were carried out prior to the finalisation of the results. They can be summarised as follows: Planning, Pre-Enumeration, Enumeration, Processing and Editing.



Metadata

Summarizes basic information about data, which can make finding and working with particular instances of data easier.

Set of data that describes and gives information about other data.



Post Enumeration Survey

This report describes and discusses the salient features of the Census 2011 PES, including its scope of coverage, methodology, the information gathered and the key results.



stats sa

Department:
Statistics South Africa
REPUBLIC OF SOUTH AFRICA



Interactive Web Based (statssa.gov.za)



Time series data

Time series data – Excel and ASCII format

Publication Number	Timeseries File	EXCEL	ASCII
publication_test.zip			
P0141	- CPI(5 and 8 digit) from Jan 2017 (201907).zip		
P0141	- CPI(COICOP) from Jan 2008 (201907).zip		
P0410	- Tourist Accommodation(201906).zip		
Report-64-11-01	Accommodation industry(2004-2015).zip		
P1101	Agricultural survey (2008-2016).zip		
P0021	Annual Financial Statistics (2013).zip		
P0041.1	Baking Statistics(201906).zip		
P0041	Civil cases for debt (201906).zip		
Report-50-02-01	Construction Industry large sample survey time series from 2004-2014.zip		
P0151.1	Construction Materials Price Indices, 2006-2019(201907).zip		
P0151	Contract Price Adjustment Provisions Work Group Indices (201712).zip		

Users will be able to access and manipulate Census 2011 data via Stats Online in PX-Web. They will also be able to extract tables on topics of interest at national, Provincial, district council, and municipality levels.

Community Profiles in Super Cross



SuperCross

This will be a package of different CDs containing **12 summarised databases** on certain topics. SuperTable, which will enable users to create their own cross tabulations and view the results easily as charts and maps on different geographical hierarchies. This product known as SuperWeb will also be available on Stats Online on the web.

THE SOUTH AFRICA I KNOW, THE HOME I UNDERSTAND

Statistics South Africa

THE SOUTH AFRICA I KNOW, THE HOME I UNDERSTAND

Statistics South Africa

Maps online

Population numbers

Province

2011

Population (2011)

Population change

2011

2010

2009

2008

2007

2006

2005

2004

2003

2002

2001

2000

1999

1998

1997

1996

1995

1994

1993

1992

1991

1990

1989

1988

1987

1986

1985

1984

1983

1982

1981

1980

1979

1978

1977

1976

1975

1974

1973

1972

1971

1970

1969

1968

1967

1966

1965

1964

1963

1962

1961

1960

1959

1958

1957

1956

1955

1954

1953

1952

1951

1950

1949

1948

1947

1946

1945

1944

1943

1942

1941

1940

1939

1938

1937

1936

1935

1934

1933

1932

1931

1930

1929

1928

1927

1926

1925

1924

1923

1922

1921

1920

1919

1918

1917

1916

1915

1914

1913

1912

1911

1910

1909

1908

1907

1906

1905

1904

1903

1902

1901

1900

1899

1898

1897

1896

1895

1894

1893

1892

1891

1890

1889

1888

1887

1886

1885

1884

1883

1882

1881

1880

1879

1878

1877

1876

1875

1874

1873

1872

1871

1870

1869

1868

1867

1866

1865

1864

1863

1862

1861

1860

1859

1858

1857

1856

1855

1854

1853

1852

1851

1850

1849

1848

1847

1846

1845

1844

1843

1842

1841

1840

1839

1838

1837

1836

1835

1834

1833

1832

1831

1830

1829

1828

1827

1826

1825

1824

1823

1822

1821

1820

1819

1818

1817

1816

1815

1814

1813

1812

1811

1810

1809

1808

1807

1806

1805

1804

1803

1802

1801

1800

1799

1798

1797

1796

1795

1794

1793

1792

1791

1790

1789

1788

1787

1786

1785

1784

1783

1782

1781

1780

1779

1778

1777

1776

1775

1774

1773

1772

1771

1770

1769

1768

1767

1766

1765

1764

1763

1762

1761

1760

1759

1758

1757

1756

1755

1754

1753

1752

1751

1750

1749

1748

1747

1746

1745

1744

1743

1742

1741

1740

1739

1738

1737

1736

1735

1734

1733

1732

1731

1730

1729

1728

1727

1726

1725

1724

1723

1722

1721

1720

1719

1718

1717

1716

1715

1714

1713

1712

1711

1710

1709

1708

1707

1706

1705

1704

1703

1702

1701

1700

1699

1698

1697

1696

1695

1694

1693

1692

1691

1690

1689

1688

1687

1686

1685

1684

1683

1682

1681

1680

1679

1678

1677

1676

1675

1674

1673

1672

1671

1670

1669

1668

1667

1666

1665

1664

1663

1662

1661

1660

1659

1658

1657

1656

1655

1654

1653

1652

1651

1650

1649

1648

1647

1646

1645

1644

1643

1642

1641

1640

1639

1638

1637

1636

1635

1634

1633

1632

1631

1630

1629

1628

1627

1626

1625

1624

1623

1622

1621

1620

1619

1618

1617

1616

1615

1614

1613

1612

1611

1610

1609

1608

1607

1606

1605

1604

1603

1602

1601

1600

1599

1598

1597

1596

1595

1594

1593

1592

1591

1590

1589

1588

1587

1586

1585

1584

1583

1582

1581

1580

1579

1578

1577

1576

1575

1574

1573

1572

1571

1570

1569

1568

1567

1566

1565

1564

1563

1562

1561

1560

1559

1558

1557

1556

1555

1554

1553

1552

1551

1550

1549

1548

1547

1546

1545

1544

1543

1542

1541

1540

1539

1538

1537

1536

1535

1534

1533

1532

1531

1530

1529

1528

1527

1526

1525

1524

1523

1522

1521

1520

1519

1518

1517

1516

1515

1514

1513

1512

1511

1510

1509

1508

1507

1506

1505

1504

1503

1502

1501

1500

1499

1498

1497

1496

1495

1494

1493

1492

1491

1490

1489

1488

1487

1486

1485

1484

1483

1482

1481

1480

1479

1478

1477

1476

1475

1474

1473

1472

1471

1470

1469

1468

1467

1466

1465

1464

1463

1462

1461

1460

1459

1458

1457

1456

1455

1454

1453

1452

1451

1450

1449

1448

1447

1446

1445

1444

1443

1442

1441

1440

1439

1438

1437

1436

1435

1434

1433

1432

1431

1430

1429

1428

1427

1426

1425

1424

1423

1422

1421

1420

1419

1418

1417

1416

1415

1414

1413

1412

1411

1410

1409

1408

1407

1406

1405

1404

1403

1402

1401

1400

1399

1398

1397

1396

1395

1394

1393

1392

1391

1390

1389

1388

1387

1386

1385

1384

1383

1382

1381

1380

1379

1378

1377

1376

1375

1374

1373

1372

1371

1370

1369

1368

1367

1366

1365

1364

1363

1362

1361

1360

1359

1358

1357

1356

1355

1354

1353

1352

1351

1350

1349

1348

1347

1346

1345

1344

1343

1342

1341

1340

1339

1338

1337

1336

1335

1334

1333

1332

1331

1330

1329

1328

1327

1326

1325

1324

1323

1322

1321

1320

1319

1318

1317

1316

1315

1314

1313

1312

1311

1310

1309

1308

1307

1306

1305

1304

1303

1302

1301

1300

1299

1298

1297

1296

1295

1294

1293

1292

1291

1290

1289

1288

1287

1286

1285

1284

1283

1282

1281

1280

1279

1278

1277

1276

1275

1274

1273

1272

1271

1270

1269

1268

1267

1266

1265

1264

1263

1262

1261

1260

1259

1258

1257

1256

1255

1254

1253

1252

1251

1250

1249

1248

1247

1246

1245

1244

1243

1242

1241

1240

1239

1238

1237

1236

1235

1234

1233

1232

1231

1230

1229

1228

1227

1226

1225

1224

1223

1222

1221

1220

1219

1218

1217

1216

1215

1214

1213

1212

1211

1210

1209

1208

1207

1206

1205

1204

1203

1202

1201

1200

1199

1198

1197

1196

1195

1194

1193

1192

1191

1190

1189

1188

1187

1186

1185

1184

1183

1182

1181

1180

1179

1178

1177

1176

1175

1174

1173

1172

1171

1170

1169

1168

1167

1166

1165

1164

1163

1162

1161

1160

1159

1158

1157

1156

1155

1154

1153

1152

1151

1150

1149

1148

1147

1146

1145

1144

1143

1142

1141

1140

1139

1138

1137

1136

1135

1134

1133

1132

1131

1130

1129

1128

1127

1126

1125

1124

1123

1122

1121

1120

1119

1118

1117

1116

1115

1114

1113

1112

1111

1110

1109

1108

1107

1106

1105

1104

1103

1102

1101

1100

1099

1098

1097

1096

1095

1094

1093

1092

1091

1090

1089

1088

1087

1086

1085

1084

1083

1082

1081

1080

1079

1078

1077

1076

1075

1074

1073

1072

1071

1070

1069

1068

1067

1066

1065

1064

1063

1062

1061

1060

1059

1058

1057

1056

1055

1054

1053

1052

1051

1050

1049

1048

1047

1046

1045

1044

1043

1042

1041

1040

1039

1038

1037

1036

1035

1034

1033

1032

1031

1030

1029

1028

1027

1026

1025

1024

1023

1022

1021

1020

1019

1018

1017

1016

1015

1014

1013

1012

1011

1010

1009

1008

1007

1006

1005

1004

1003

1002

1001

1000

999

998

997

996

995

994

993

992

991

990

989

988

987

986

985

984

983

982

981

980

979

978

977

976

975

974

973

972

971

970

969

968

967

966

965

964

963

962

961

960

959

958

957

956

955

954

953

952

951

950

949

948

947

946

945

944

943

942

941

940

939

938

937

936

935

934

933

932

931

930

929

928

927

926

925

924

923

922

921

920

919

918

917

916

915

914

913

912

911

910

909

908

907

906

905

904

903

902

901

900

899

898

897

896

895

894

893

892

891

890

889

888

887

886

885

884

883

882

881

880

879

878

877

876

875

874

873

872

871

870

869

868

867

866

865

864

863

862

861

860

859

858

857

856

855

854

853

852

851

850

849

848

847

846

845

844

843

842

841

840

839

838

837

836

835

834

833

832

831

830

829

828

827

826

825

824

823

822

821

820

819

818

817

816

815

814

813

812

811

810

809

808

807

806

805

804

803

802

801

800

799

798

797

796

795

794

793

792

791

790

789

788

787

786

785

784

783

782

781

780

779

778

777

776

775

774

773

772

771

770

769

768

767

766

765

764

763

762

761

760

759

758

757

756

755

754

753

752

751

750

749

748

747

746

745

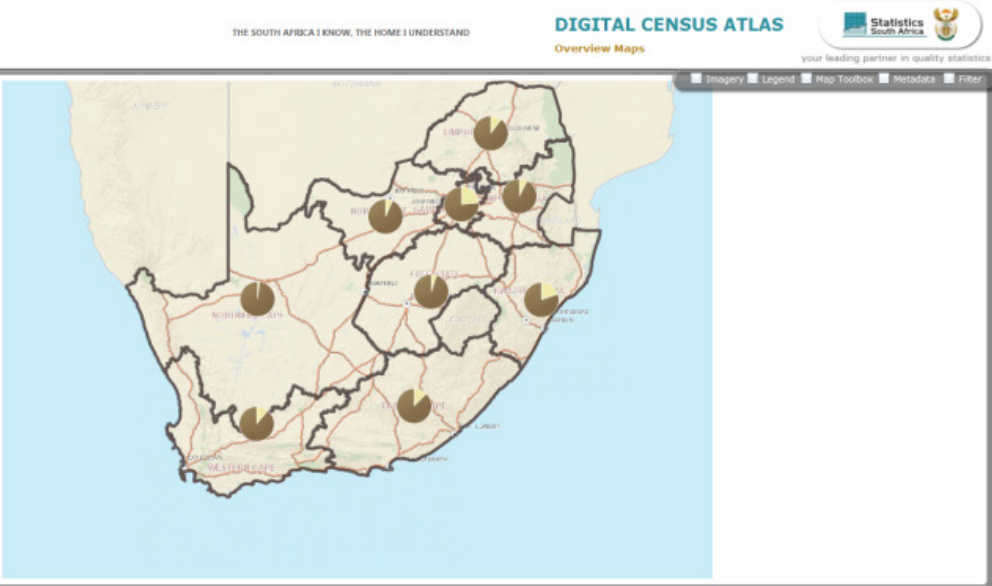
744

743

742

<

Digital Census Atlas

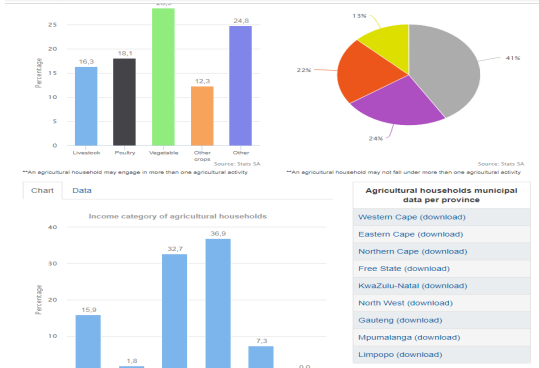


The 2012 Digital Census Atlas dissemination product is based on interactive mapping, where the user selects a variable and level of geography for rendering through a web-based interface. The product will have four main components, namely Overview maps, Feature maps, comparative maps and Reporting.



Interactive Mobile

These will provide easy and interactive interaction with statistical data to deliver **Census 2011 results to everyone, everywhere.**



Roambi at Stats SA

Stats SA has broadened its scope of dissemination by introducing new electronic platforms and revamping our existing platforms. Roambi is one of the new and exciting platforms used to disseminate publications. Currently only users of iPhones, iPod Touch and iPads are able to access the Roambi platform while users of Blackberry, Android and Windows Mobile platforms have access to the mobi site. For our advanced users, a map-based tool and a cross-tabulation tool are available. For more information on these platforms please visit the website at <http://www.statsa.gov.za>.

Roambi is available in two formats, Roambi Analytics which is targeted at iPhone and iPod Touch users and the Stats SA app which is powered by Roambi Flow. Roambi Analytics enables you to interact with data and visualise it optimally on a mobile device. The Stats SA app, which is currently available exclusively on the iPad, allows you to access and navigate through our complete list of publications and subscribe to your favourite Stats SA publication. Whenever a new issue of your favourite publication is released, you will receive notification to that effect, thus allowing you to stay ahead with the information you need.

The Stats SA app, which has a magazine feel to it, enables you to interact with both the data and beautifully designed data visualisations. Furthermore, some of the publications include videos that elaborate on the contents of the publication. You will also be able to compare current information with previous results in order to track changes. A lot of attention is paid to the look and feel of the app and your overall experience while using different visuals. This interactive application will allow you to interrogate data from different angles, select and download precisely what you are looking for. Through the use of videos, you can also learn more about the data.

Census 2011 household indicators

Annual household income

Province	Income	Change
Western Cape	11.9	0.2
Eastern Cape	31.1	0.1
Northern Cape	14.3	0.3
Free State	24.3	0.1
KwaZulu-Natal	26.4	0.1
North West	24.3	0.1

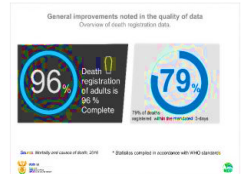
A roambi with a few Census 2011 household indicators.

Roambi is targeted at users who prefer a pre-built package of information (data-graphics and commentary).

According to the *Recorded Live Births* report for 2017, produced by Statistics South Africa, birth registration completeness was estimated at 89%, while 78% of births were registered within the legislated 30 days of occurrence.¹



Registration for adult deaths during 2011–2016 intercensal period was estimated at 96%, with 79% of these deaths registered within 3 days of occurrence.²



South Africa, through the Department of Home Affairs (DHA), maintains an electronic National Population Register (NPR) from the civil registration system. Entry into the NPR is through birth registration, at which point a unique identification number is generated and issued together with a birth certificate. This number is a lifetime number used to issue an identity document (ID) or a smart ID card at the age of 16.

A complete Civil Registration and Vital Statistics System will ensure that no one is excluded from health coverage, schooling, and basic human rights.

Data Stories



stats sa
 Department:
 Statistics South Africa
 REPUBLIC OF SOUTH AFRICA



Future Releases (Thematic Reports)

Monograph on Population Structure and Composition in South Africa

The monograph will provide a detailed description of the distribution of population by age and sex. The data will be disaggregated at national and provincial levels. Different techniques for evaluating and analyzing data on age and sex compositions will be employed.

This will also include quality assessment issues regarding the data.

Monograph on Mortality

The monograph will give an overview of trends and patterns in the number of deaths in the country.

The analysis will include demographic and socioeconomic characteristics of the household where the deceased was a member. Demographic techniques (direct and indirect) will be employed to estimate mortality indicators throughout the country.

This will also include quality assessment issues regarding the mortality data.



stats sa

Department:
Statistics South Africa
REPUBLIC OF SOUTH AFRICA



Future Releases (Thematic Reports)

Monograph on Fertility

The monograph will focus on levels, trends and patterns of fertility.

Different methods (direct and indirect) of fertility estimation will be used to determine fertility patterns in the country.

This will also include quality assessment issues regarding fertility data.

Monograph on Migration

The monograph will indicate the patterns, flows and trends of interprovincial migration in the country. The analysis will include demographic and socioeconomic differentials of immigrants and emigrants. The use of migration methods will help in the estimation of migrants.



stats sa

Department:
Statistics South Africa
REPUBLIC OF SOUTH AFRICA



Future Releases (Thematic Reports)

Monograph on Education

The monograph will highlight the education and literacy status of South Africans.

Monograph on Household Services

The monograph will highlight issues regarding the provision of basic services – indicators as well as differentials. The report will be able to point out specific areas which are not meeting requirements in terms of service delivery.

Monograph on Labour Market

The monograph will harness the population that is currently economically active and that is not in the labour market. Other questions will allow the breakdown of the employed persons by variables such as occupation, industry and status of employment.



stats sa

Department:
Statistics South Africa
REPUBLIC OF SOUTH AFRICA



Future Releases (Electronic)

Nesstar

This data repository allows users to browse, analyse, tabulate and download census datasets and metadata in various formats.

Datasets can be downloaded in ASCII, STATA, SPSS, SAS formats. This will be available on Stats Online on the web.

10% Sample

A CD containing the unit records in ASCII format plus a Readme file, metadata, record file, code-list and questionnaire.

CD for Census @schools

SUPERCROSS census data

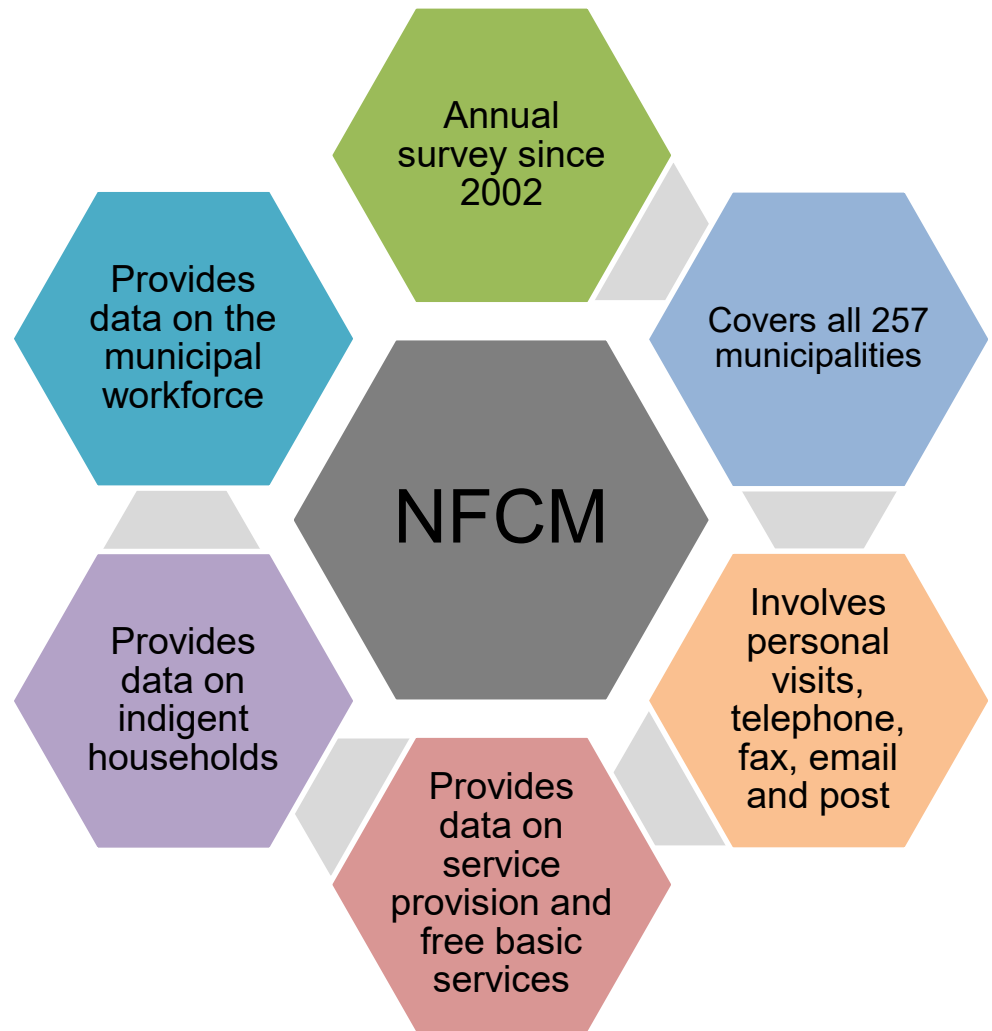


stats sa

Department:
Statistics South Africa
REPUBLIC OF SOUTH AFRICA



1. NFCM : Service delivery estimates from municipalities (supply side)
2. Key findings from 2017 to 2018:
 - More consumer units received services
 - A decline in provision of free basic services
 - Indigents increased from **3 511 741** to **3 631 443**
 - Bucket toilets decreased from **60 557** to **42 612**
3. Unit data available on website, or on request



stats sa

Department:
Statistics South Africa
REPUBLIC OF SOUTH AFRICA



Links to Products

All Census 2011 products listed are available from Stats SA Website

www.statssa.gov.za via quick links indicators

The screenshot shows the Stats SA website homepage. At the top left is the Stats SA logo and the text "stats sa Department: Statistics South Africa REPUBLIC OF SOUTH AFRICA". To the right is a search bar and social media icons. Below the header is a navigation menu with "Home", "Find Statistics", "Publications", "Census", "Suppliers", and "About Us". A secondary navigation bar contains various indicators: "t 2019=4,3% y/y", "PPI", "August 2019=+4,5 y/y", "GDP", "2019 - Q2 = 3,1% q/q", "Unemployment", "2019 - Q2 = 29%", "Population (Mid-year estimate) 58,78 million mid 2019", and "CPI August 20".

More than 1 million births registered in 2018

There were just over 1 million births registered in South Africa in 2018. This reflects an increase of 2,0% from 2017 to 2018.

Birth registrations by status of registration, 2018

Registration Status	Count
Current registrations	927 113
Late registrations	81 952
Total	1 009 065

8,1% of births registered during 2018 were registered late

Key Statistics

The People

Population 55,7 million (2016)

Year	Female	Males
1996	~20M	~20M
2001	~22M	~22M
2007	~24M	~24M
2011	~26M	~26M
2016	~28M	~28M

Unemployment 29% q/q (Q2-2019)

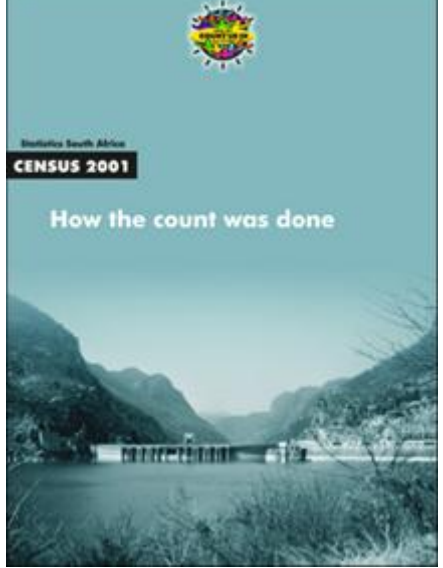
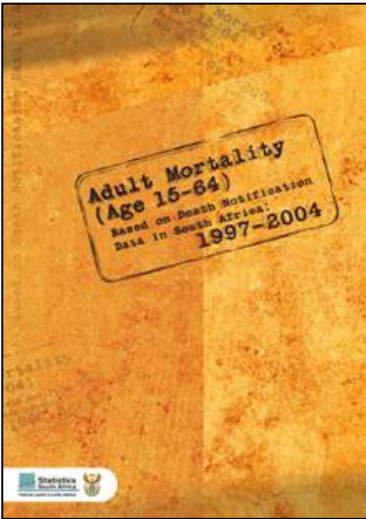
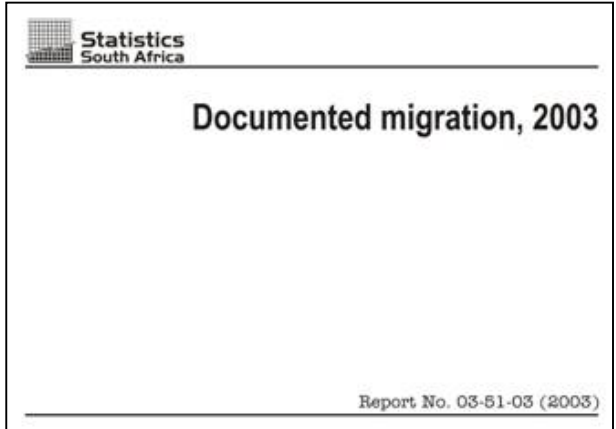
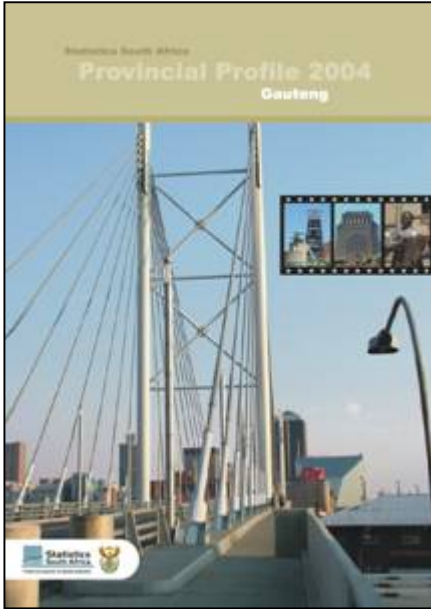
The Economy

The Living Conditions

The Natural Environment

Product formats

Print



stats sa
Department:
Statistics South Africa
REPUBLIC OF SOUTH AFRICA



Product formats

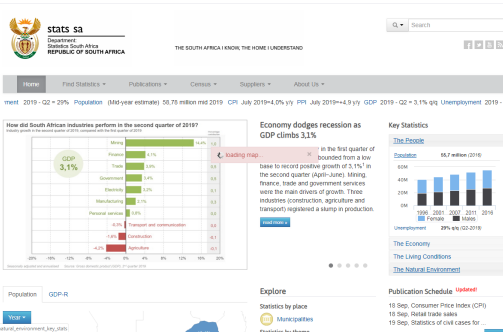
Digital



stats sa
Department:
Statistics South Africa
REPUBLIC OF SOUTH AFRICA

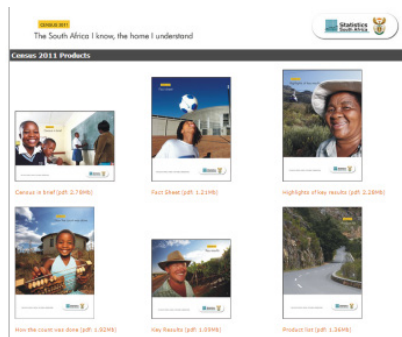


Individual Links



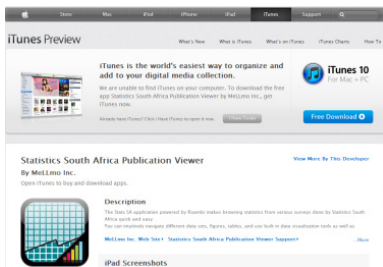
Website

www.statssa.gov.za



PDF publications

<http://www.statssa.gov.za/Census2011/Products.asp>



App Store

<https://itunes.apple.com/us/app/statistics-south-africa-publication/id570849330?mt=8>

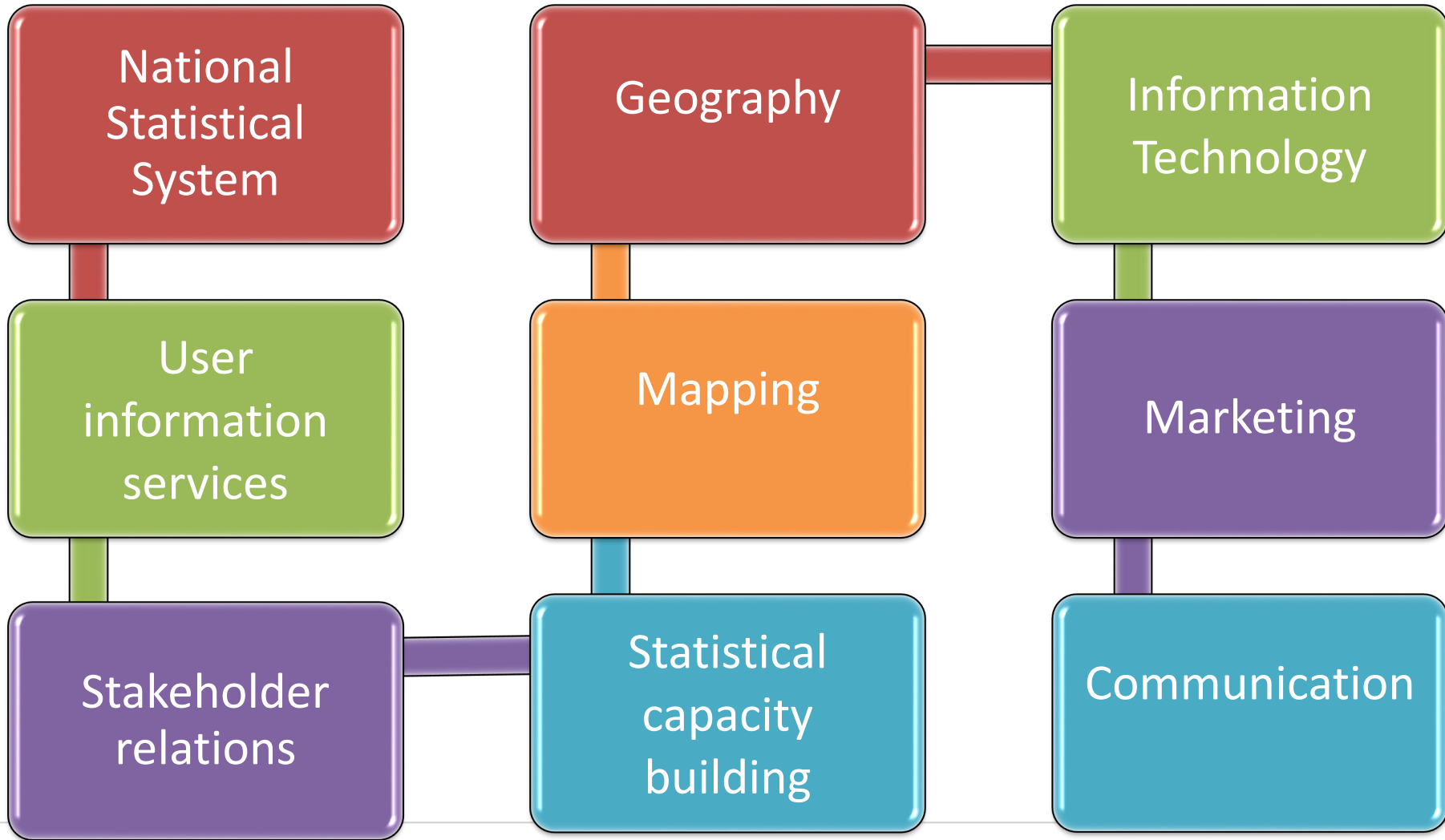


stats sa

Department:
Statistics South Africa
REPUBLIC OF SOUTH AFRICA



SSI Business units



stats sa

Department:
Statistics South Africa
REPUBLIC OF SOUTH AFRICA



Objectives

- To share in the release and **dissemination** and **communication** strategy within the province.
- **Citizens:** To make informed choices (re: government, political parties).
- **Policy developers and decision-makers:** Statistical information is increasingly used to guide planning and resource allocation, and for monitoring and evaluation of new initiatives and approaches.

“If you can’t measure it, you can’t manage it”



stats sa

Department:
Statistics South Africa
REPUBLIC OF SOUTH AFRICA





the **NSS**

Department:
National statistics system
REPUBLIC OF SOUTH AFRICA

The official supplier of national statistics



stats sa

Department:
Statistics South Africa
REPUBLIC OF SOUTH AFRICA



National Statistics System

- The NSS has become the guiding principle for various forums
 - M&E, Economic analysis forums, etc.
- Municipalities are working with the NSS to improve their administrative data and Integrated Development plans(IDP`s).
- Statistical capacity building(Government Department, Research Institutions, Academia and Media
- Marketing and communication



stats sa

Department:
Statistics South Africa
REPUBLIC OF SOUTH AFRICA



Stakeholder Education

- Establish relationships with stakeholders with regards to acquiring data in order to create our maps, etc
 - i.e. City Maps (City of Cape Town), Department of Rural Development and Land Reform
- Make stakeholders aware of projects such as Dwelling Frame, Geographical Information Frame(GIF),Census,etc.
- Taking geo-statistical and information data to the user
 - Students
 - Corporates
 - Government
- Visibility at forums/conferences in order to market Stats SA GIS and Stats SA as a whole
 - i.e. GISSA,Population Forum, etc



stats sa

Department:
Statistics South Africa
REPUBLIC OF SOUTH AFRICA



Product categories

Reference products

- Census dictionary
- Census handbook

Standard products

- Census / Community area profiles

Analytical products

Articles in trends

Customised products / user defined

User defined products

Geography products

Reference maps



stats sa

Department:
Statistics South Africa
REPUBLIC OF SOUTH AFRICA



User information services



Statistics South Africa
CENSUS 2001

Community profiles with mapping

For technical assistance or data-related enquiries please contact our User information services at:
Tel: (012) 310 8600
Fax: (012) 310 8500

E-mail: info@statssa.gov.za
Website: www.statssa.gov.za

Dataset: Descriptive - Census 1996-2011 Download Table | Excel 21

Add to | Row | Column | Filter | Water | Remove

⌵ Collapse All | Un-Select All | 0 Items selected.

Summation Options

- Descriptive
- Census Year (3) [X]
- South Africa by 2011 Electoral Wards (4277) [X]
- South Africa by 2011 Municipal Boundaries (8) [X]
- Age (122) [X]
- Sex (2) [X]
- Population group (8) [X]
- Relationship to household head (excludes 1996) (15) [X]
- Relationship to household head (includes 1996) (10) [X]
- Main language (15) [X]
- Marital status (excludes 1996) (7) [X]
- Marital status (includes 1996) (7) [X]
- School attendance (5) [X]
- Education level (grouped) (8) [X]

You must measure something for a meaningful table. The table is now using the default summation option, listed in the Filter.

Retrieve Data | Clear Table | Save Table | Print Table | Settings | Trash

Census Year

Filters:
Default Summation: Person weighted

Wafers:
Cell count: 4 (1 x 4 x 1) total

Census Year	
1996	-
2001	-
2011	-
Total	-

Custom Data



Community Survey 2007

Interactive data in SuperCROSS

Statistics South Africa
Preferred supplier of quality statistics

Statistical release
P9001

Personal services industry, 2008
(Preliminary)

Embargoed until:
10 December 2009
14:30

Enquiries:
Kubusiso Tshabalala
012 310 8420

133 Andrew Street • Private Bag 944, 0001 Pretoria, South Africa
Tel: +27 (0) 12 310 9911 • Fax: +27 (0) 12 361 7281



nesstar

Stats SA

DESCRIPTION | TABULATION

Nesstar is an entrance to a **virtual data library** allowing you to search for, locate, browse and download a wide variety of statistical and related data.

Note: In the case of sample surveys, frequencies and percentages in tables should be weighted in order to obtain results representing the universe.

To apply weights, click on the "Weight" icon and then select the weight variable to use.

Copyright © Statistics South Africa, 2007 - All Rights Reserved - Contact Us

Labour market dynamics in South Africa 2008

Prof. Lechaba
Statistician-General
Statistics South Africa 2008



stats sa

Department:
Statistics South Africa
REPUBLIC OF SOUTH AFRICA



Geographic Information Systems

About Us Contact Us Projects Tools Quick Maps

Welcome to the Statistics SA Geography Website

Africa GIS Quick Maps GIS Viewer Reporting

2006 Profiles

Imagery

Census Atlas

Dwelling Frame

Geography...
statistically speaking



stats sa

Department:
Statistics South Africa
REPUBLIC OF SOUTH AFRICA



Geographic information systems

- Establish relationships with stakeholders with regards to acquiring data in order to create our maps, etc
- Visibility at GIS related forums/conferences in order to market Stats SA GIS and Stats SA as a whole
 - i.e. GISSA, PLATO, etc



stats sa

Department:
Statistics South Africa
REPUBLIC OF SOUTH AFRICA



Information technology

- Ensure working IT environment
- Support districts and province
- Respond to IT queries
- Perform backups



stats sa

Department:
Statistics South Africa
REPUBLIC OF SOUTH AFRICA



Thank you



Vanessa Wiener- vanessam@statssa.gov.za
Mahier Hattas – mahierh@statssa.gov.za



stats sa

Department:
Statistics South Africa
REPUBLIC OF SOUTH AFRICA

